

HMF 3820-K

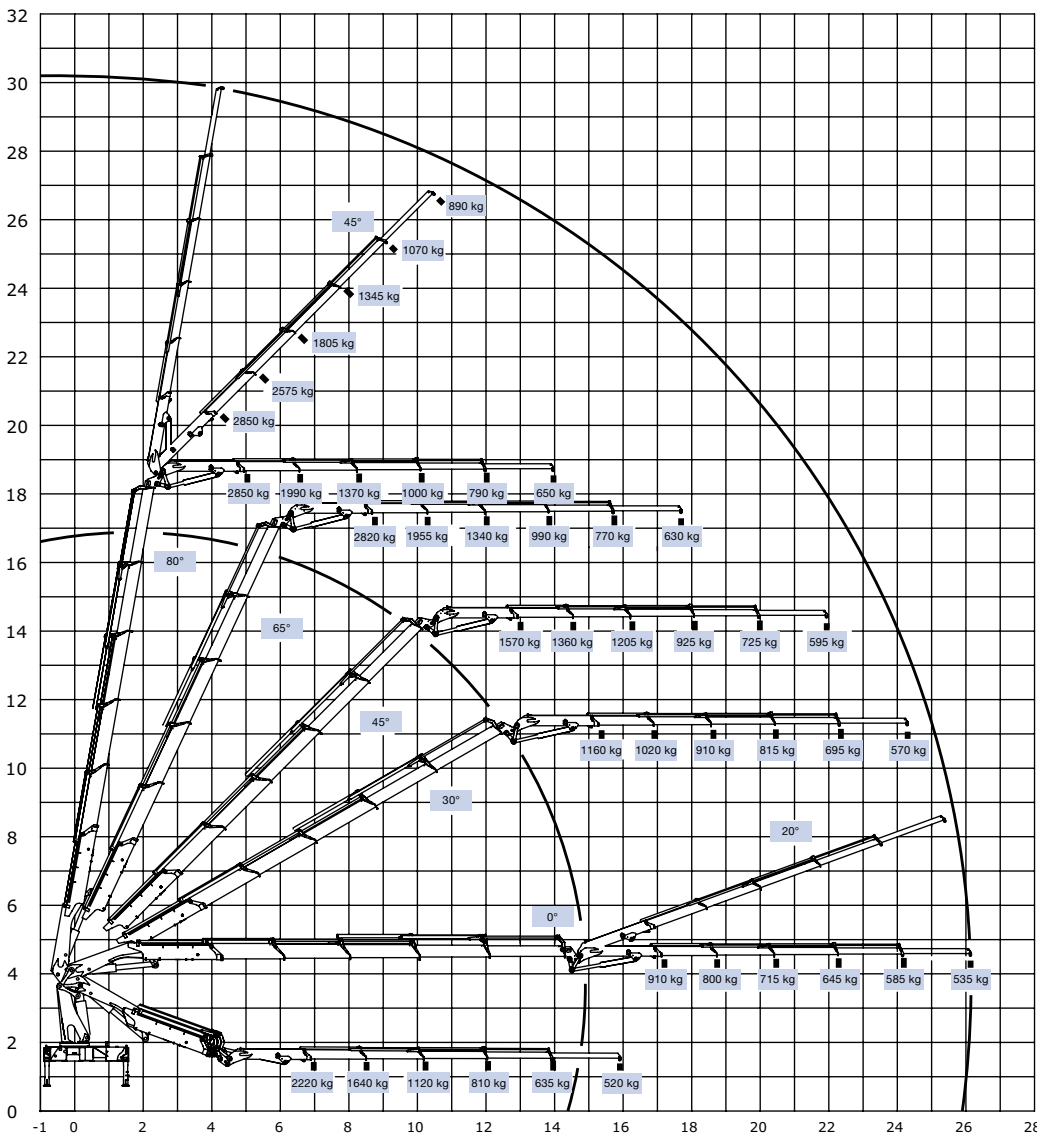


- power to lift.

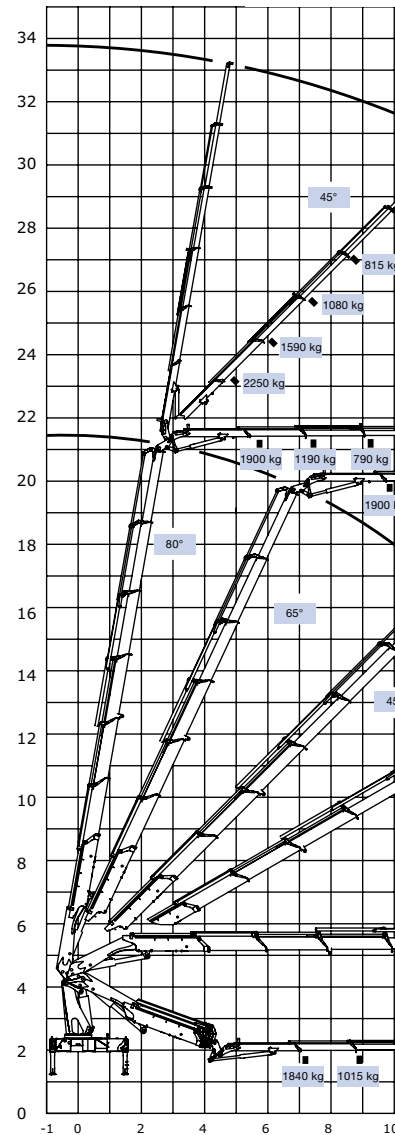
HMF 3820-K

| Loading group B3 | | 3820-K2 | 3820-K3 | 3820-K4 | 3820-K5 | 3820-K6 | 3820-K7 | 3820-K8 |
|-----------------------------------|-------|---------|---------|---------|---------|---------|---------|---------|
| Load moment | tm | 36.2 | 35.3 | 34.2 | 33.1 | 33 | 32.2 | 32 |
| Hydraulic reach | m | 8.1 | 10.1 | 12.2 | 14.35 | 16.6 | 18.95 | 21.3 |
| Slewing torque | kgm | 4000 | 4000 | 4000 | 4000 | 4000 | 4000 | 4000 |
| Slewing angle | ° | kont. | kont. | kont. | kont. | kont. | kont. | kont. |
| Height above chassis | mm | 2384 | 2384 | 2384 | 2384 | 2384 | 2384 | 2384 |
| Width, folded | mm | 2518 | 2518 | 2518 | 2518 | 2518 | 2518 | 2518 |
| Length of loader, no extra valves | mm | 1148 | 1148 | 1148 | 1148 | 1148 | 1274 | 1274 |
| Stabilizer spread, standard | mm | 5550 | 5550 | 5550 | 5550 | 5550 | 5550 | 5550 |
| Stabilizer spread, long | mm | 7770 | 7770 | 7770 | 7770 | 7770 | 7770 | 7770 |
| Weight excl. stabilizers | kg | 3150 | 3410 | 3660 | 3900 | 4080 | 4240 | 4400 |
| Weight of stabilizers, standard | kg | 470 | 470 | 470 | 470 | 470 | 470 | 470 |
| Working pressure | MPa | 350 | 350 | 350 | 350 | 350 | 350 | 350 |
| Pump performance | l/min | | | | 80-110 | | | |
| Oil tank capacity, separate tank | l | | | | 250 | | | |
| Power consumption | kW | | | | 47-65 | | | |
| Hook height 1.5 m from column | m | 2.9 | 2.8 | 2.7 | 2.7 | 2.6 | 2.6 | 2.5 |

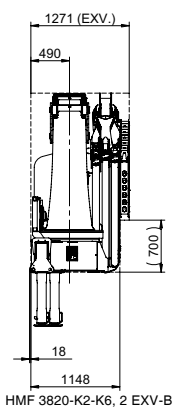
HMF 3820-K5 + FJ1000-K5



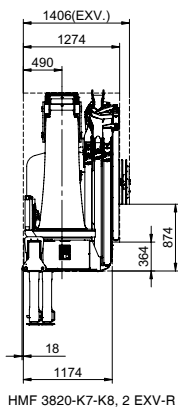
HMF 3820



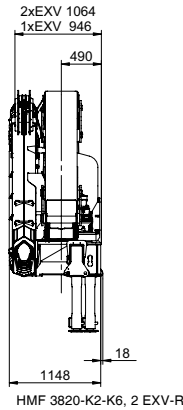
- power to lift.



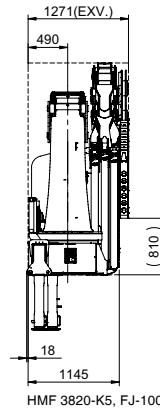
HMF 3820-K2-K6, 2 EXV-B



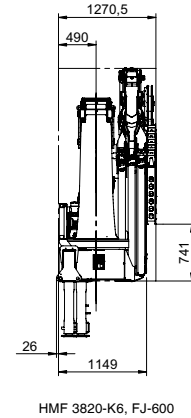
HMF 3820-K7-K8, 2 EXV-R



HMF 3820-K2-K6, 2 EXV-R

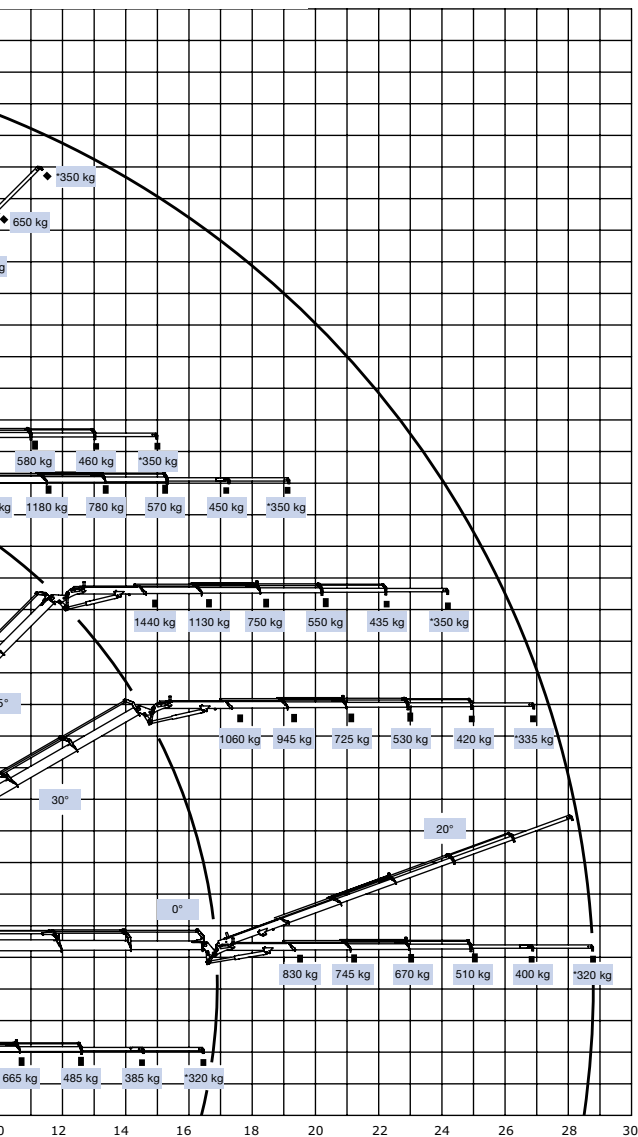


HMF 3820-K5, FJ-1000

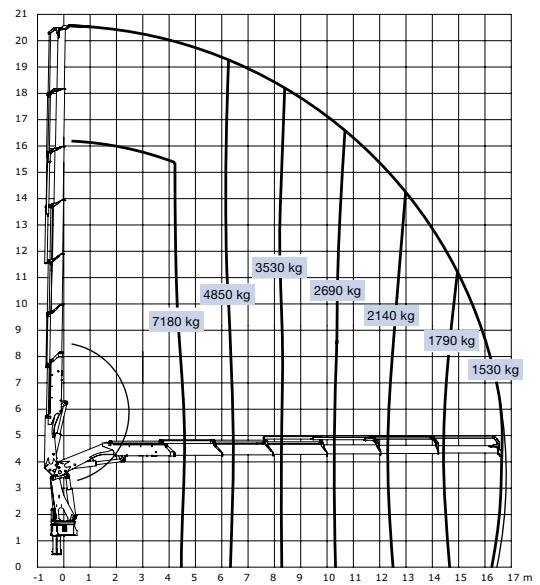


HMF 3820-K6, FJ-600

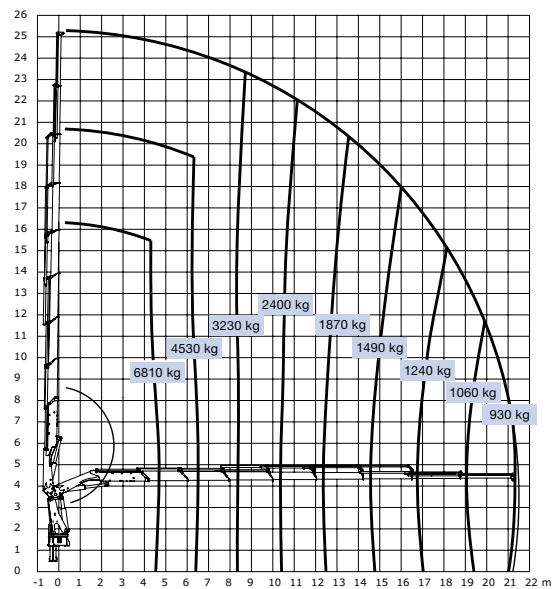
-K6 + FJ600-K4



HMF 3820-K6



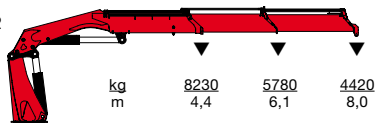
HMF 3820-K8



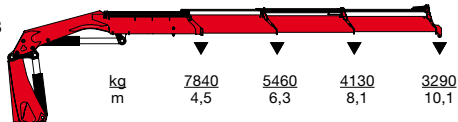
HMF 3820-K



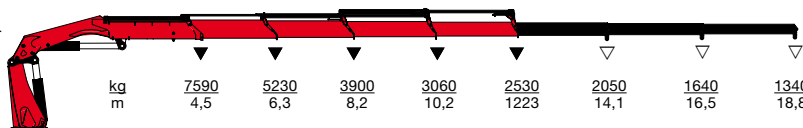
HMF 3820-K2



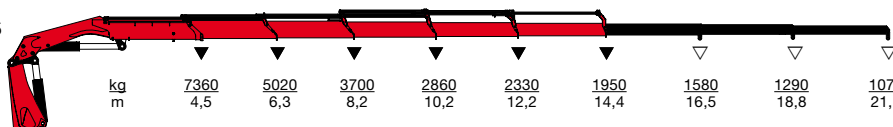
HMF 3820-K3



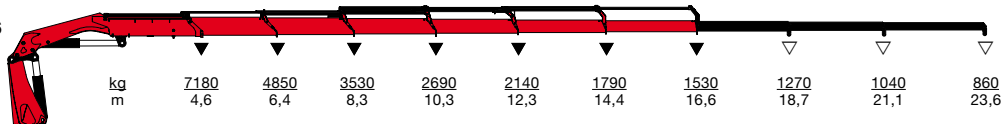
HMF 3820-K4



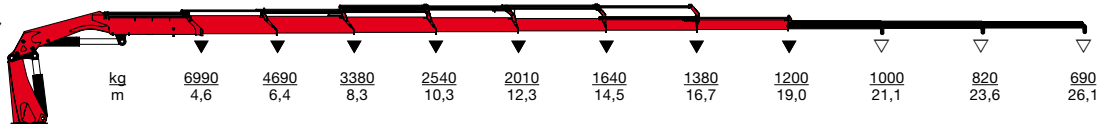
HMF 3820-K5



HMF 3820-K6



HMF 3820-K7



HMF 3820-K8



▼ Lifting capacity without manual extensions
 ▽ Lifting capacity with manual extensions

Z008495-1



Højbjerg Maskinfabrik A/S • Oddervej 200 • DK-8270 Højbjerg
 Tel.: +45 8627 0800 • Fax: +45 8627 0744 • info@hmf.dk

www.hmf.dk

We reserve the right to introduce improvements and modifications